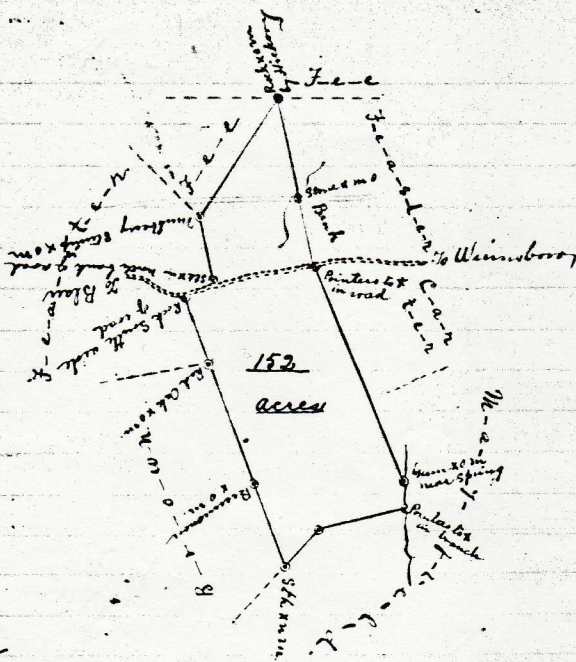


Scale 20 chs per inch



South Carolina

At the request of Miss F. G. Feaster I have surveyed the above tract of land known as Buena-Vista and find it to contain one hundred and fifty two acres. It is situated in Fairfield County on a tributary of Beaver Creek, and a tributary of Rock Creek and has such shape marks and boundaries as the above plat represents. Surveyed — day of — A. D.

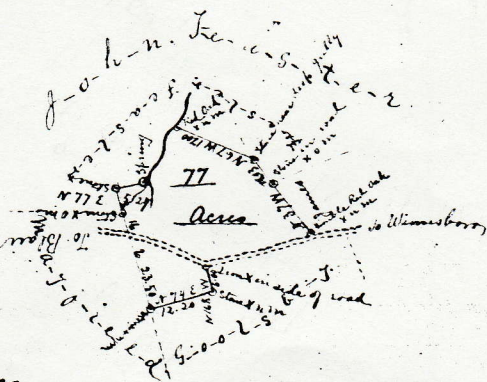
J. Feaster Lyles
Surveyor

Title recorded Dec 23-1908

Book A.G. page 377.

being part of land conveyed in that Deed. } Record to date, Dec 14th 1911.

Scale 20 chs per inch



Title recorded

Jan 7-1889.

Book A.L.

Page 417.

South Carolina

To the fifty seven acres recorded above find it to contain seventy-seven acres. It is situated in Fairfield County on a tributary of Beaver Creek and has such shape marks & boundaries as the above plat represents. Surveyed in the fall of 1908 A. D.

J. Feaster Lyles
Surveyor

Record to date, Dec 14-1911.